

Energy Auditing Services

Why EAS ?

- Accurate & consistent online information.
- Data Historian for quality analysis.
- Central database system. Online energy flow.
- MIS reports in 15 min, 30 min, hourly, daily.
- Configurable Alarm.
- Time based graphs for demand, voltage, current, PF & energy.
- Configurable single line diagram of grid station.

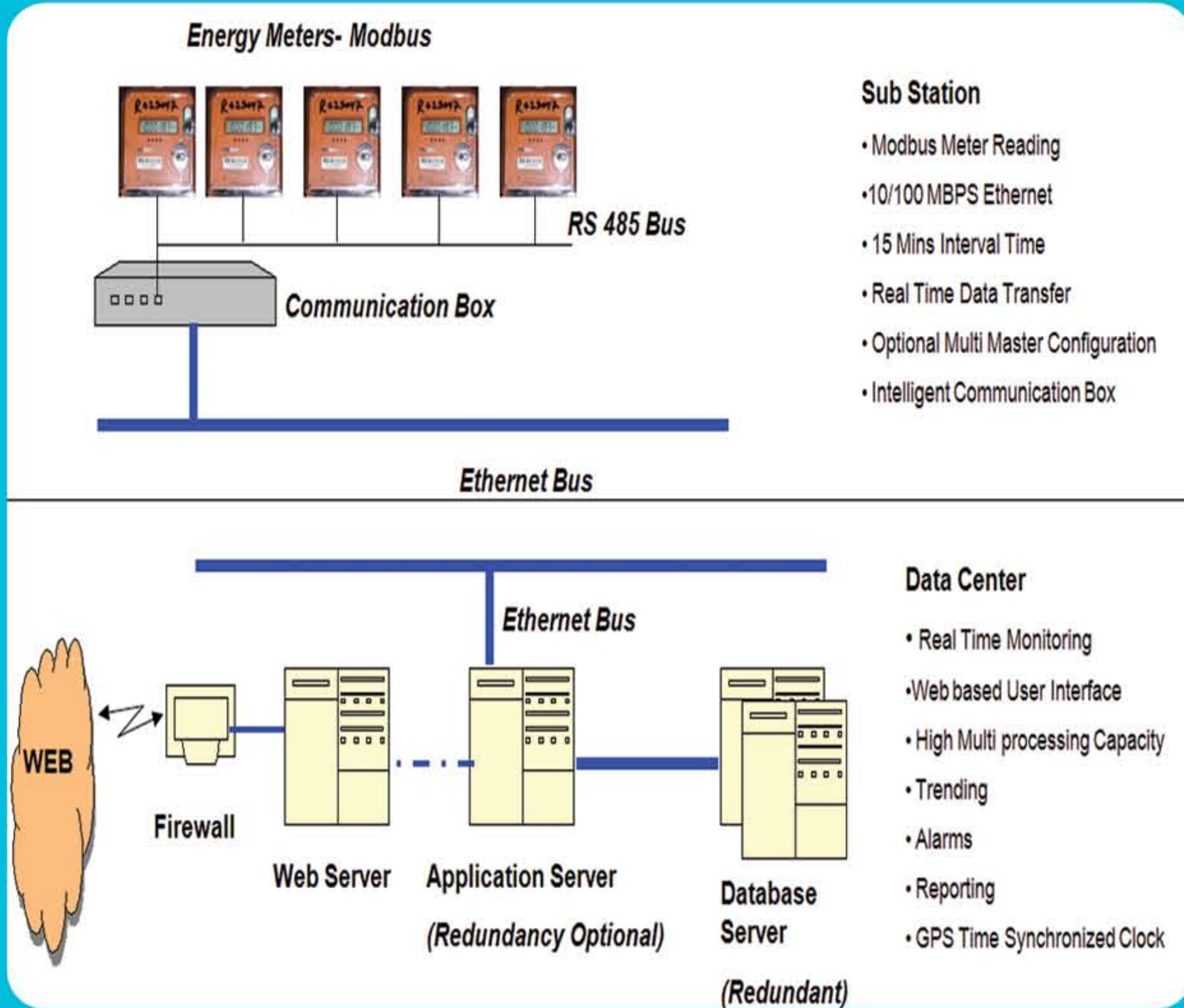
Services

- Provide solution to improve the electricity network efficiency with available resources.
- Data analysis to protect network equipments.
- Data study to pin point the high loss sections & suggesting the practices to reduce the loss.

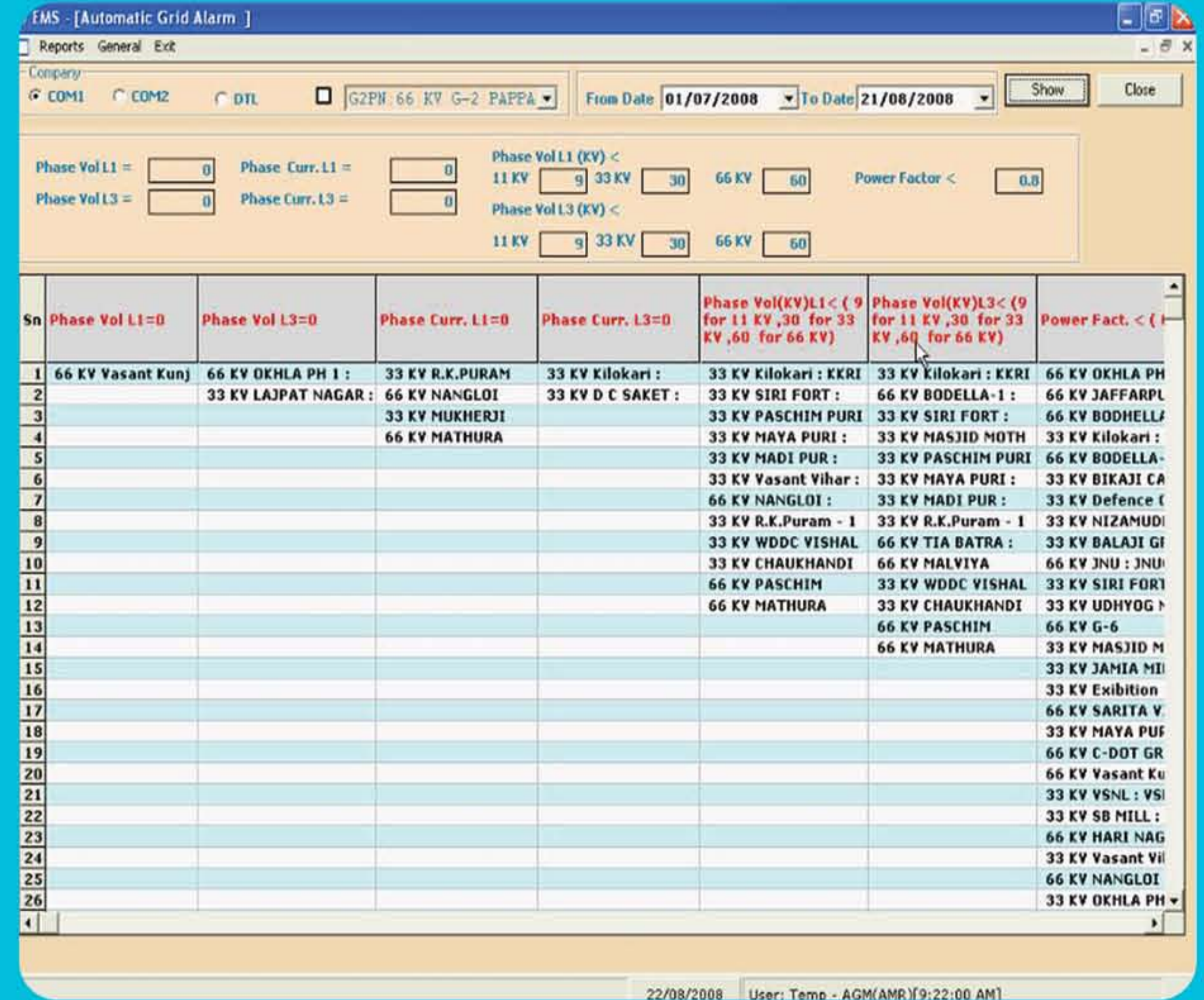
Energy Auditing services (EAS) provides access to real time energy data from multiple metering points. The system caters to various business functions like :

- Energy Audit.
- Online Alarms.
- Demand Management.
- Load Survey Analysis.
- DT Health Analysis.
- Utility Bill Verification.
- Production Cost Calculation.
- Power Quality monitoring.
- Exception Reporting.

Typical Setup



Alarms



In a Typical Setup Feeder meters in a substation are arranged in daisy chain with one meter as master and others as slave. System can connect to multiple substations simultaneously It also support point to point metering.

System provides online event information like voltage failures, exceeding of threshold, error message. The messages can be viewed in form of reports or can be attached to hardware like hooters. System has option to integrate SMS based messaging platform. System also has options to configure multiple and user defined alarms .

Capacity

- 0.1 million meters
- 10 years data historian

Protocols

- Modbus
- DLMS
- Custom

Communication

- TCP/IP
- GSM
- GPRS/ CDMA
- Dialup
- RS232
- RS485

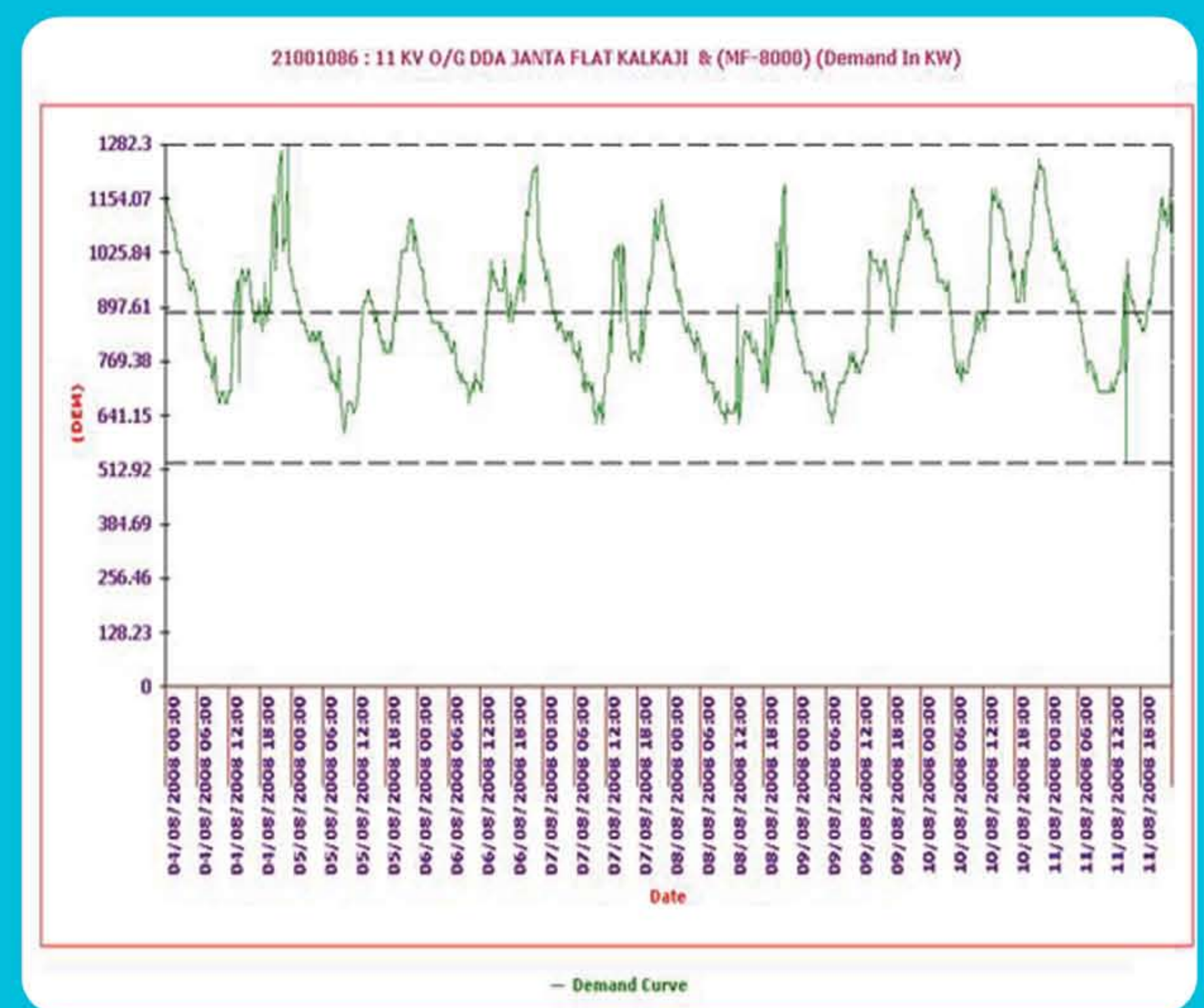
Parameters monitored:

- Instantaneous voltage, current, frequency & power factor
- Forward KWh, KVARH & KVAH
- Instantaneous KW, KVA, KVAR
- Integration time energy meters:
 - 15 minutes
 - 30 minutes
 - 1 Hour
- Integration time power quality monitor 10 msec

MIS



Custom Report Builder



System generates a number of tabular & graphical reports to monitor and analyze network :

- Outage of feeders
- Daily Peak loads
- Load Profiles
- Energy Consumption Report
- Utility Bill Verification Report
- Daily Log Sheets
- Cost per Vehicle
- Demand Report

This tool provides user option to configure and publish new MIS reports in the system without any need for change in base system. User has option to define reports criteria, Data layout, Access authorization and place in the current system itself .

