

Power Management System

The system provides access to real time data of generation, drawl and frequency available at various RLDCs. This system is powered by Intelligent data processor by Venture Power Services. Data historian is a powerful tool embedded in PMS. The tool provides option for rich data analysis for future trading. All this is backed up by standard modules for sale and purchase management, contract management, and finance management.



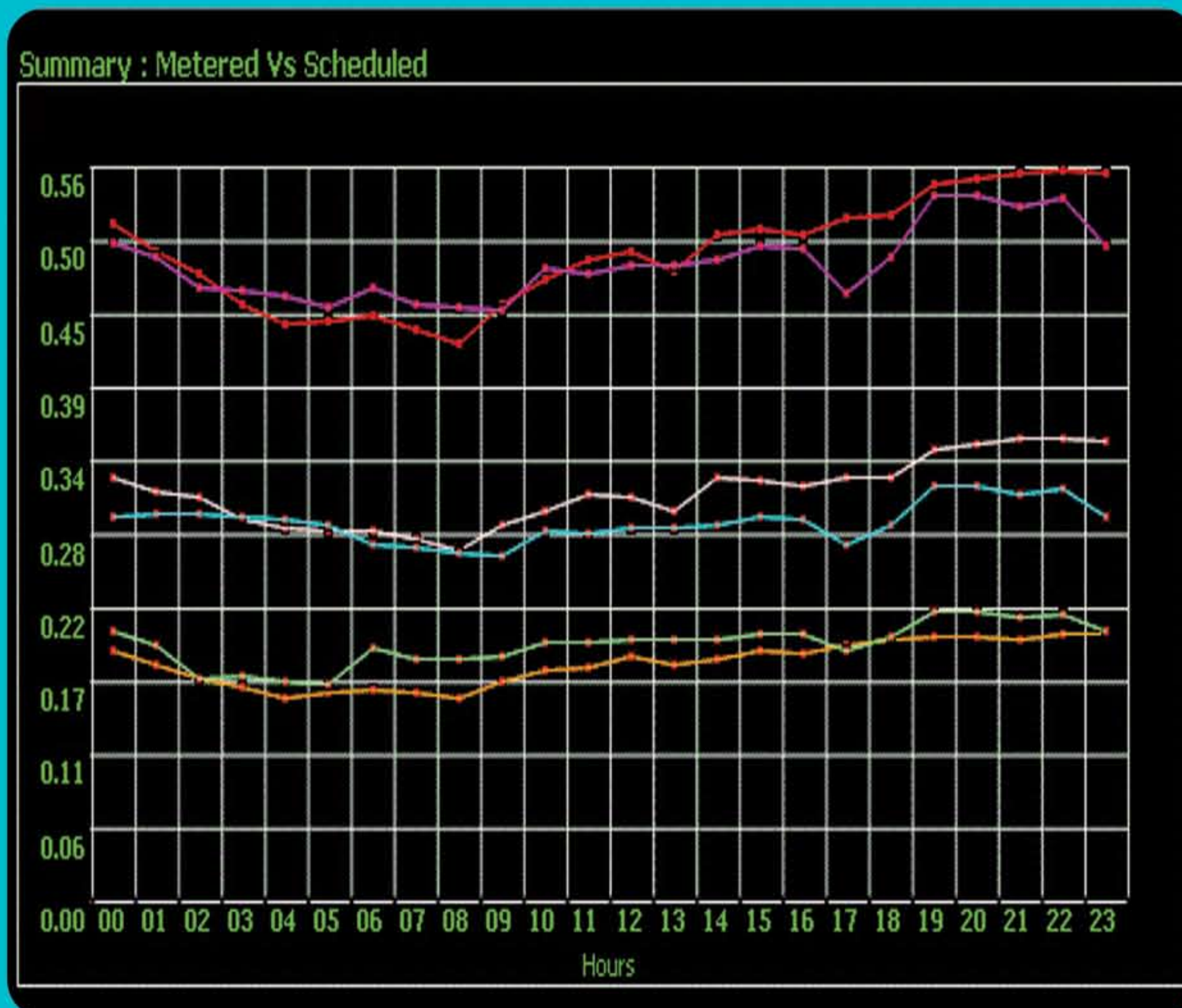
Intelligent Data Processor	Decision Support
Data Extractor	Opportunity management
Data processor	Risk Management
Historian	STOA Cost Calculator
Finance Management	Power Management Operation Support
Invoice Generation	Contract Management
Bill Verification (As per concerned REA)	STOA Management
Payment Tracking	Corridor Management
Client Accounting	
MIS	Admin Console
Standard MIS	User management
Custom Report Builder	Audit Trail
Data Configuration	System Administration
Cost Management	Data management policy
Interface Management	
Security	
Authentication	
Audit trail	

Features

- MIS
- Data Security
- Admin Console
- Decision Support
- Data Configuration
- Finance Management
- Intelligent Data Processor
- Power Management Operation Support

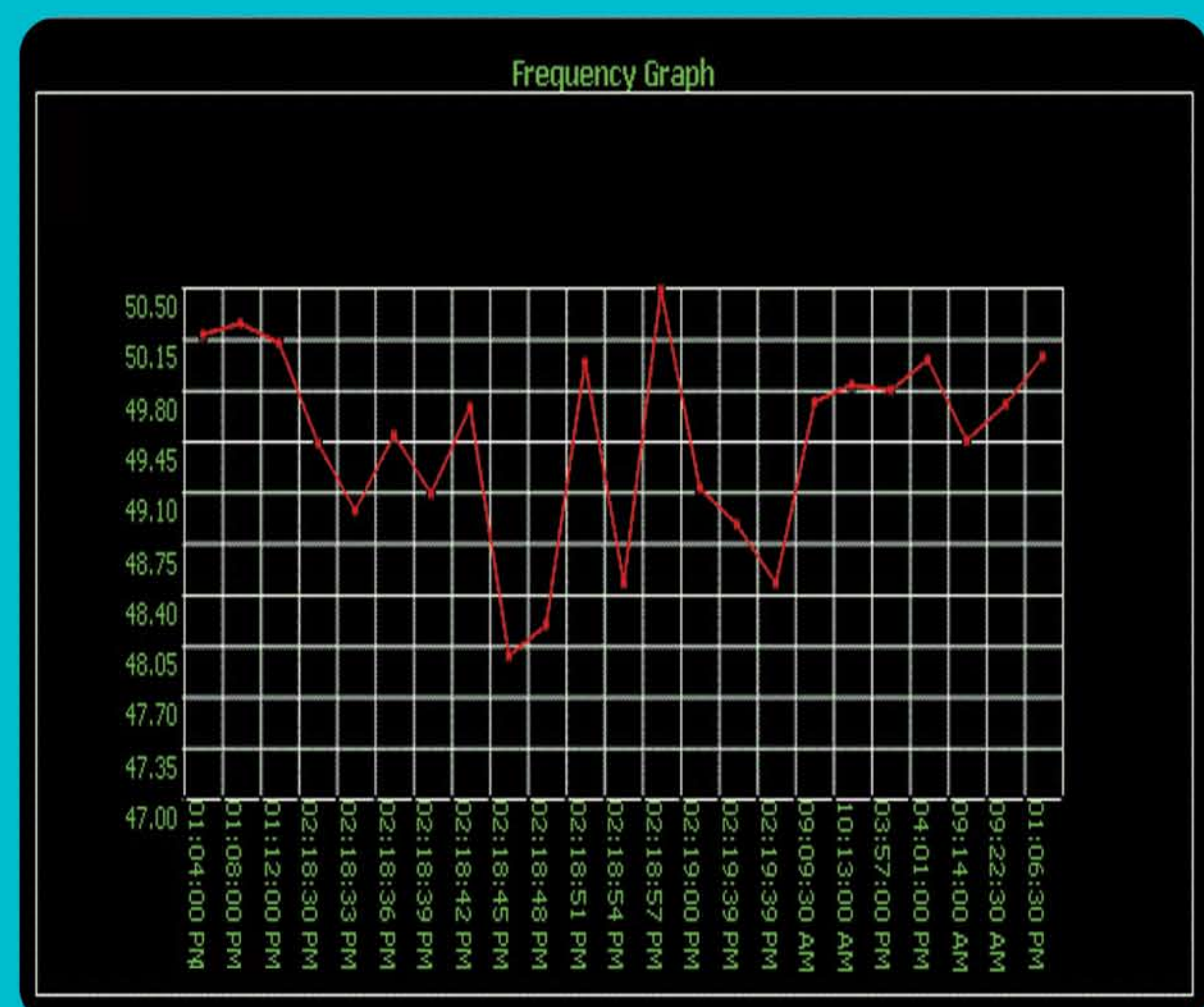
- **Intelligent Data Processor :**
Data extractor, processing & data historian.
- **Decision Support :**
Supporting opportunity management, risk management & short term open access cost calculator.
- **Finance Management :**
Sale and purchase invoice generation, bill verification, payment tracking & client accounting.
- **Power Management Operation Support :**
Contract management, short term open access & corridor management.
- **MIS :**
Real time information of data generation, drawl and frequency.
- **Admin Console :**
System to control user management & audit trail.
- **Data Configuration :**
Utility to manage data interface.
- **System Administration :**
Provide the utility to manage the master data.

➔ Schedule VS Metered



Graphical presentation shows the comparison between the scheduled and actual metered energy (in MUs) at every time slot of 15 mins.

➔ Grid Frequency



Graph shows the variation in grid frequency at different time intervals.

➔ Real Time Information

Data driven active decision support system is another key feature of the power management system which facilitates in realizing the opportunities and minimizing the risk factor involved in the business transactions. Decision support system is strongly backed by cost calculators and opportunity management.

➔ System Generated Bill

S No.	Description	Energy (MUs)	Rate Ps/KWh	Amount (Rs)
1	Weekly Energy Bill for the period 01/Jul/2008 To 08/Jul/2008 for period 02:00-10:59 Hrs	8.008	687	55014960
2	Weekly Energy Bill for the period 01/Jul/2008 To 08/Jul/2008 for period 00:00-01:59 Hrs	0.924	682	6301680
3	Weekly Energy Bill for the period 01/Jul/2008 To 08/Jul/2008 for period 11:00-18:59 Hrs	4.928	700	34496000
Total Invoice Value				95812640

Finance management helps in managing and maintaining the financial records of the trade. It provides auto/manual invoice generation, auto/manual bill verification (As per concerned REA), payment tracking and client accounting.



Email : Info@mobineers.com
 Website : www.mobineers.com
 Registered Office : 9/7, Shakti Nagar, New Delhi-110007
 Phone : 91-11-23840387, 91-11-47085266
 Branch Office : EON D-215 Sector -63, Noida-201301 Tel : 0120-4642504